



**International A-Division Catamaran
2010 National Championships
Takapuna, North Shore City, New Zealand
8th to 12th February, 2010**

SAILING INSTRUCTIONS

The Organising Authority is: Takapuna Boating Club Inc.,

1 RULES

- 1.1 The regatta will be governed by the rules as defined in *The Racing Rules of Sailing*.
- 1.2 The Yachting New Zealand Safety Regulations Part 1, shall apply.
- 1.3 Racing rule 44.1 is changed so that the Two-Turns Penalty is replaced by the One-Turn Penalty.
- 1.4 For protests where only a Rule of Part 2 is alleged to have been broken an arbitration hearing will be offered prior to any formal hearing.

2 NOTICES TO COMPETITORS

Notices to competitors will be posted on the official notice board located on the main deck of the Takapuna Boating Club clubhouse.

3 CHANGES TO SAILING INSTRUCTIONS

Any change to the sailing instructions will be posted before 0900 hours on the day it will take effect, except that any change to the schedule of races will be posted by 1900 hours on the day before it will take effect.

4 SIGNALS MADE ASHORE

- 4.1 Signals made ashore will be displayed on the flagpoles on the main deck of the Takapuna Boating Club clubhouse.
- 4.2 When flag AP is displayed ashore, '1 minute' is replaced with 'not less than 30 minutes' in the race signal AP.
- 4.3 Flag **D** with a sound signal means: "the warning signal will be made not less than 30 minutes after flag **D** is displayed". Boats are requested not to set sail until this signal is made.

5 SCHEDULE OF RACES

5.1 *Registration:*

Competitors shall register with the Race Office at Takapuna Boating Club between 0900hrs and 1200hrs on Monday 8th February.

5.2 *Briefing:*

A briefing for competitors will take place on the main deck of the Takapuna Boating Club at 1200 on Monday 8th February.

5.3 The event shall consist of a series of up to 8 races – (refer schedule below).

Day	Date	Racing	First Warning Signal
Day 1	Mon 8 th Feb	Practice Race	1400
Day 2	Tues 9 th Feb	Up to 2 Races	1130
Day 3	Wed 10 th Feb	Up to 2 Races	1130
Day 4	Thur 11 th Feb	Up to 2 Races	1130
Day 5	Fri 12 th Feb	Up to 2 Races	1130

5.4 One extra race per day may be sailed, provided that racing does not become more than 1 race ahead of schedule and the change is made according to instruction 3.

5.5 After a long postponement, to alert boats that a race or sequence of races will begin soon, an orange flag will be displayed (with one sound signal) for at least four minutes before a warning signal is displayed.

5.6 For subsequent races on the same day the scheduled time of the warning signal for the next race will be displayed with Flag L as soon as possible after the finish of the preceding race.

5.7 Races may be sailed back to back.

5.8 On Friday 12th February no warning signal will be made after 1500hrs.

5.9 A prize-giving dinner will be held at the Takapuna Boating Club at 1900 on Friday 12th February.

6 CLASS FLAG

Class flags will be:

<i>Class</i>	<i>Flag</i>
A-Class cat	Red A-Class insignia on a White background

7 RACING AREA

Appendix 1 shows the approximate location of the racing area.

8 THE COURSES

8.1 The diagram in Appendix 2 shows the course, including the approximate angles between legs, the order in which marks are to be passed, and the side on which each mark is to be left.

8.2 No later than the warning signal, the race committee signal boat will display the approximate compass bearing of the first leg.

9 MARKS

9.1 Marks 1 will be a very large orange cylindrical buoy.

9.2 Marks 2 will be a small orange spherical buoy.

- 9.3 Marks 3S and 3P will be orange cylindrical buoys.
- 9.4 New marks, as provided in instruction **12.1**, will be the same as the mark being replaced.
- 9.5 The starting marks will be a race committee boat at the starboard end and an orange spherical buoy at the port end.
- 9.6 The finishing marks will be a race committee boat at the port end and an orange spherical buoy at the starboard end.
- 9.7 A race committee boat signalling a change of a leg of the course is a mark as provided in instruction **12.2**.

10 AREAS THAT ARE OBSTRUCTIONS

- 10.1 The area between Takapuna Beach and the yellow truncated cones – “200 metre markers” – is a restricted zone limiting speeds to 5 knots. All boats shall act with caution in this area.
- 10.2 Boats shall at all times observe the Auckland Regional Council Navigation Safety Bylaws when racing in the Rangitoto Channel, in particular 3.14.1 “A Prohibited Moving Zone extending 100m astern and 100m to each side of a vessel, and continued at such width to 500m ahead, following the line of the buoyed channel when changing course is reserved around any vessel of 500 gross tonnage or greater.” All boats shall keep clear of this Zone.

11 THE START

- 11.1 The starting line will be between a staff displaying an orange flag on the starting mark at the starboard end and the port-end starting mark.
- 11.2 A boat starting later than **4** minutes after her starting signal will be scored Did Not Start without a hearing. This changes rule **A4**.

12 CHANGE OF THE NEXT LEG OF THE COURSE

- 12.1 To change the next leg of the course, the race committee will lay a new mark (or move the finishing line) and remove the original mark as soon as practicable. When in a subsequent change a new mark is replaced, it will be replaced by an original mark.
- 12.2 Except at a gate, boats shall pass between the race committee boat signalling the change of the next leg and the nearby mark, leaving the mark to port and the race committee boat to starboard. This changes rule **28.1**.

13 THE FINISH

- 13.1 The finishing line will be between a staff displaying an orange flag on the finishing mark at the port end and the starboard-end finishing mark.
- 13.2 When a course is shortened at a rounding mark, because of anchoring restrictions in the Cable Zone, the finishing boat may hold station under power and on transit and may not be anchored.

14 PENALTY SYSTEM

- 14.1 Rule 44.1 is changed so that the Two-Turns Penalty is replaced by the One-Turn Penalty.

15 TIME LIMITS AND TARGET TIMES

- 15.1 Time limits and target times are as follows:

Time Limit	Mark 1 Limit	Target Time
120 mins	30 mins	60 mins

If no boats have passed Mark 1 within the appropriate time limit the race will be abandoned. Failure to meet the target time will not be grounds for redress. This changes rule **62.1(a)**.

- 15.2 Boats failing to finish within **20** minutes after the first boat sails the course and finishes will be scored Did Not Finish without a hearing. This changes rules **35**, **A4** and **A5**.

16 PROTESTS AND REQUESTS FOR REDRESS

- 16.1 Immediately after finishing a boat intending to protest shall, in addition to the requirements of rule 61.1(a), inform the race committee at the finishing line of her intention to protest and identify the boat(s) protested against. The protesting boat must receive an acknowledgement from the race committee.
- 16.2 Protest forms are available at the race office. Protests and requests for redress or reopening shall be delivered there within the appropriate time limit.
- 16.3 For protests where only a rule of Part 2 is alleged to have been broken, an arbitration hearing will be offered prior to any formal hearing. Yachting New Zealand Regulation 4.5.5 will apply. This changes rule **44.1**.
- 16.4 The protest time limit is **90** minutes after the last boat has finished the last race of the day.
- 16.5 Notices will be posted no later than **30** minutes after the protest time limit to inform competitors of hearings in which they are parties or named as witnesses. Hearings will be held in the protest room at Takapuna Boating Club, beginning no earlier than the time posted.
- 16.6 Notices of protests by the race committee will be posted to inform boats under rule **61.1(b)**.
- 16.7 Breaches of instructions **11.2**, **18**, **21**, **23**, **24**, **25**, **26** and **30** will not be grounds for a protest by a boat. This changes rule **60.1(a)**. Penalties for these breaches may be less than disqualification if the protest committee so decides. The scoring abbreviation for a discretionary penalty imposed under this instruction will be **DPI**.
- 16.8 On the last scheduled day of racing a request for reopening a hearing shall be delivered

- (a) within the protest time limit if the requesting party was informed of the decision on the previous day;
- (b) no later than 30 minutes after the requesting party was informed of the decision on that day.

This changes rule **66**.

- 16.9** On the last scheduled day of racing a request for redress based on a protest committee decision shall be delivered no later than 30 minutes after the decision was posted. This changes rule **62.2**.

17 SCORING

- 17.1** 5 races are required to be completed to constitute a series.

- 17.2** (a) when fewer than **6** races have been completed, a boat's series score will be the total of her race scores.
- (b) when **6** or more races have been completed, a boat's series score will be the total of her race scores excluding her worst score.

- 17.3** To request correction of an alleged error in posted race or series results, a boat may complete a scoring enquiry form available at the race office.

18 SAFETY REGULATIONS

- 18.1** Boats shall check out before going afloat and check in after being afloat by signing on and off in the Takapuna Boating Club clubhouse.

- 18.2** A boat that retires from a race shall notify the race committee as soon as possible and check in immediately upon retiring to the beach.

19 REPLACEMENT OF CREW OR EQUIPMENT

- 19.1** Substitution of competitors will not be allowed.

- 19.2** Substitution of damaged or lost equipment will not be allowed unless authorized by the race committee. Requests for substitution shall be made to the race committee at the first reasonable opportunity.

- 19.3** Sail batten changes will be permitted.

20 EQUIPMENT AND MEASUREMENT CHECKS

A boat or equipment may be inspected at any time for compliance with the class rules and sailing instructions. On the water, a boat can be instructed by a race committee measurer or representative to proceed immediately to a designated area for inspection.

21 ADVERTISING

Boats may display advertising of the event sponsor supplied by the organising authority.

22 OFFICIAL BOATS

Official boats shall display a Takapuna Boating Club pennant.

23 SUPPORT BOATS

- 23.1 All support boats must register with the Organising Authority at registration and nominate the boat(s) they support.
- 23.2 Team leaders, coaches and other support personnel shall stay outside areas where boats are racing from the time of the preparatory signal for the first class to start until all boats have finished or retired or the race committee signals a postponement, general recall or abandonment.
- 23.3 The penalty for infringing these requirements shall be at the discretion of the protest committee, but may include disqualification of one or more boats associated with the infringing support/coach boat.
- 23.4 When flag W is displayed on a committee boat all support boats shall remain afloat and assist sailors of all countries.

24 PROHIBITED ANCHORING AREA

- 24.1 Boats associated with the championship and registered support boats shall comply with the New Zealand Government Regulation "Submarine Cables and Pipelines Protection Act 1996". This regulation prohibits anchoring in the area shaded in the No Anchoring area in Appendix 1 and defined on charts NZ532 and NZ5322.
- 24.2 Any boat or support craft breaking SI 24.1 will be subject to a hearing resulting in a report to their National Authority and ISAF. As a consequence, a competitor associated with the coach of the support craft may be disqualified from the race closest to the time of the infringement.

25 TRASH DISPOSAL

Boats shall not put trash in the water. Trash may be placed aboard support and race committee boats.

26 LAUNCHING / HAUL-OUT RESTRICTIONS

Unless otherwise approved by the Organising Authority, all competing boats and equipment shall be launched and retrieved on the designated areas on Takapuna Beach near the Takapuna Boating Club.

27 RADIO COMMUNICATION

Except in an emergency, a boat shall neither make radio transmissions while racing nor receive radio communications not available to all boats. This restriction also applies to mobile telephones.

28 PRIZES

28.1 Prizes will be given as follows:

- Open Winner: National Championship Trophy
- 1st Veteran
- 1st, 2nd and 3rd in each division
(subject to a minimum of 3 entries in each division for prizes to be awarded)

28.2 Other trophies and prizes may be awarded at the discretion of the Organising Authority.

29 DISCLAIMER OF LIABILITY

Competitors participate in the regatta entirely at their own risk. See rule 4, Decision to Race. The Organizing Authority and all parties involved in the regatta

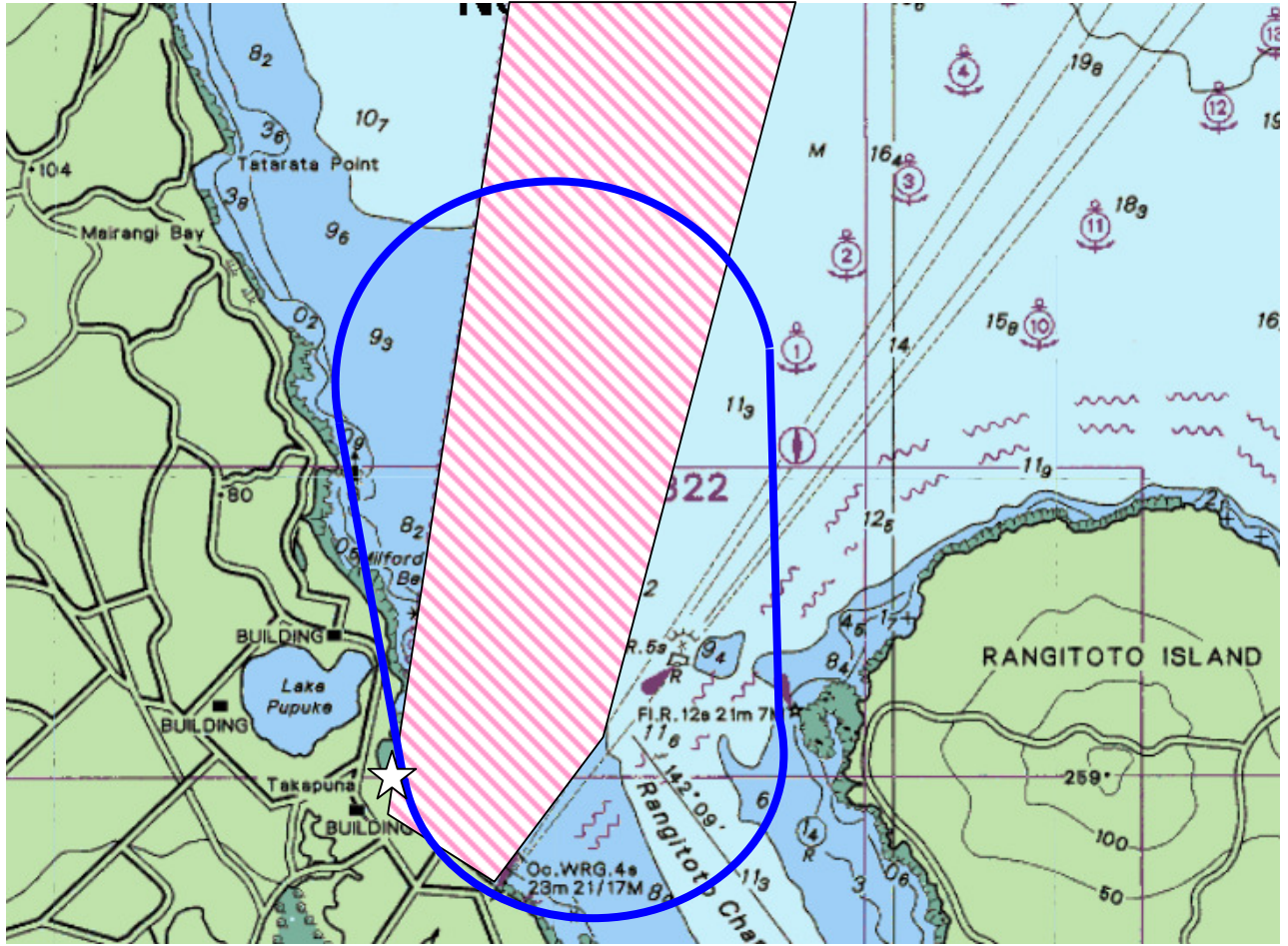
organisation will not accept any liability for material damage or personal injury or death sustained in conjunction with or prior to, during, or after the regatta.

30 INSURANCE

Each participating boat shall be insured with valid third-party liability insurance with a minimum cover, including coverage when racing off Takapuna Beach of NZD 100,000 (or the equivalent) (recommended NZD 1,000,000). Proof of this insurance, including racing cover, shall be available at all times.

APPENDIX 1

APPROX RACING AREA and TAKAPUNA BOATING CLUB LOCATION



Takapuna Boating Club location



Approximate course area



Prohibited anchoring area

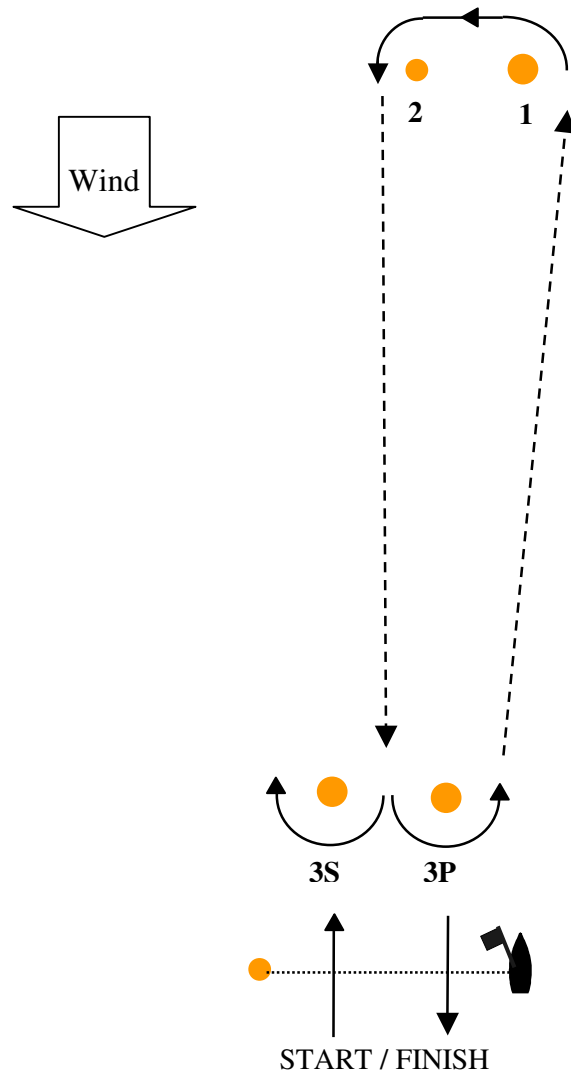
APPENDIX 2

COURSE ILLUSTRATION

W1 : Start – 1 – 2 – Finish

W2 : Start – 1 – 2 – 3S/3P – 1 – 2 – Finish

W3 : Start – 1 – 2 – 3S/3P – 1 – 2 – 3S/3P – 1 – 2 – Finish



Mark 2 shall be set approximately 200 metres to port of Mark 1. The bearing from Mark 1 to Mark 2 shall be approximately 90 degrees to port of the bearing to Mark 1 from the Start or previous leeward Marks 3S and 3P.

The course designation will be displayed on the race committee signal boat on a board as black letters and numerals on a white background.